

Flauto I

Ouvertüre Nr. 3 Leonore

Ludwig van Beethoven, aus op. 72
herausgegeben von Christian Rudolf Riedel

Adagio

ff \rightrightarrows p dim. pp sfp sempre pp

17 pp sempre stacc. e pp

22 pp cresc.

26 fff p p fz fz fz fz p

32 pp attacca

Allegro

37 12 pp cresc. poco a poco

57 5 6 7 8 9 10 11 il forte

64 12 ff sempre ff

72

79

Beethoven - Leonore

Flauto I

5

316 10 VI. I *cresc.* *fp*

332 *cresc.*

339 1

344 3 3 3 3

348 3 3 3 3 1 (-8) 2 *pp*

354 3 4 5 6 7 8 9 *p cresc.*

372 *ff* *sempre ff*

380

386 2 *sf*

393 *sf sf sf sf sf sf sf*

400 *G* 9 *Cl. I p*

Bizet - Carmen Suite No. 1

2

Flauto I.

Ob.od. Clar. D

Fl. II. *dim. molto*

13 14 15 16 17 18 19 20

rall. molto 5 *a tempo* E 1 Solo *pp* *dim.*

ppp

Nº 2. Intermezzo. (Prelude to Act III)

Andantino quasi Allegretto. ($\text{♩} = 88$)

Arpa

Solo

pp

A

3 *p* *p cresc.* B 3 2

Fl. II. *pp* *dim.* *ppp smorz.*

Nº 3. Seguedille. (Act I)

Allegretto. ($\text{♩} = 100$)

Solo

pp *ppp*

16 17 18 19 20 21 A

Ob. I. *pp*

Mendelssohn - Midsummer Night's Dream, Scherzo

6

FLAUTO I.

5 P

sempre stacc. *mp*

ob *p*

Q *cresc.* *dim.*

pp Ho Geist! Wo geht die Reise hin? *attacca*

L'istesso tempo. *pp* No 2

Schueller als des Mondes Ball. *Allegro vivace.* *p*

O mach'et sich dafur.

3

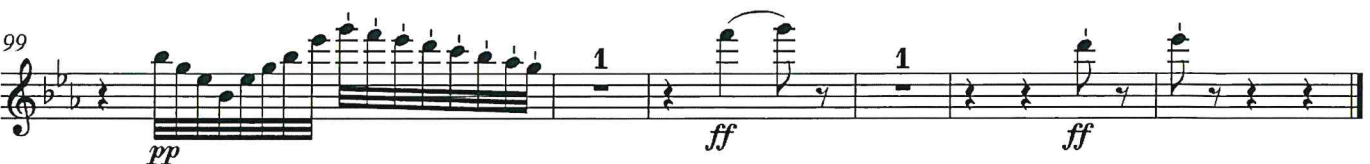
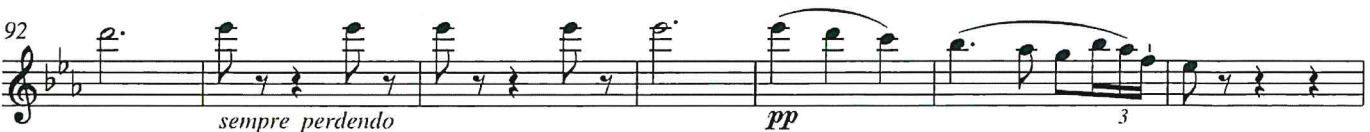
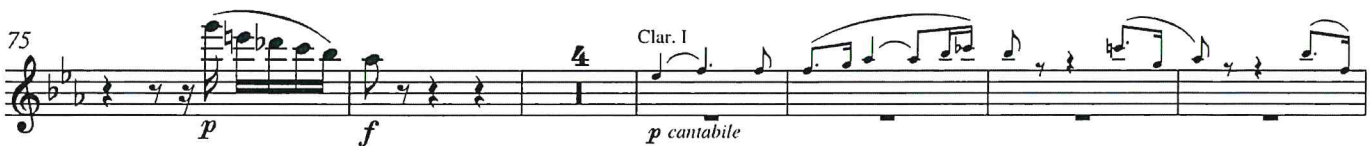
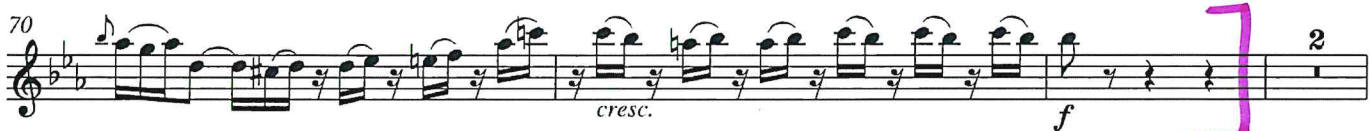
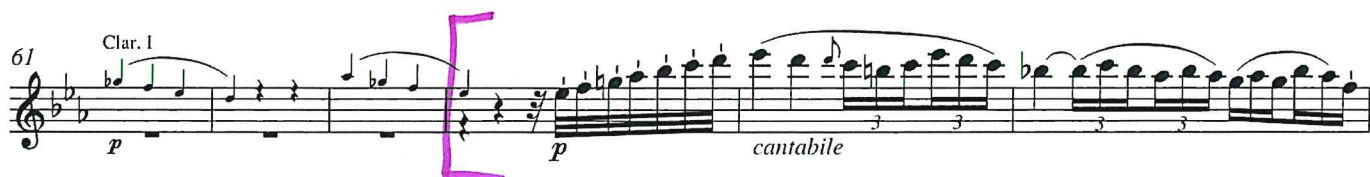
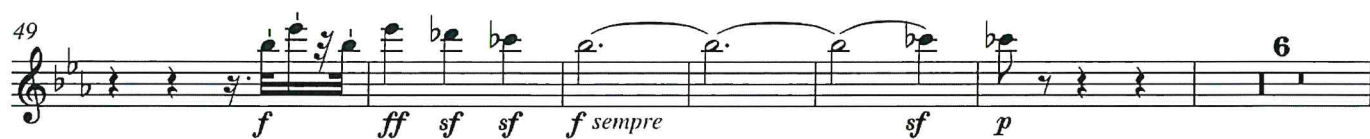
1

cresc.

Beethoven - Sym No 4

6

Flöte



Flûte I

à Raymond Bonheur

Prélude

à

l'après-midi d'un faune

Claude Debussy

Très modéré
Solo
p doux et expressif

4
1 1 2 Cor I
G.P. *p* Solo

12

17
p cre - - - scen - - - do *f* < *f* < *f* < *p* **2** légèrement et expressif
Solo

22

24
p

27
Fl. II

28
Cédez
f *p*

Flûte I

3

3 Sans traîner
au mouv! *1* Clar. I *mf*

30
p

MATERIEL APPARTENANT

à

1 et 2 FLUTES et P^{le}

DURAND S. A.

Editions Musicales

24, rue Vernet - 75005 PARIS

TOUTE REPRODUCTION
PAR AUTOGRAFIE, OU
LA COPIE SERA RIGOU-
REUSEMENT POURSUIVIE

25

Ravel
Daphnis et Chloé

Début des Fragments Symphoniques (2^e Série)

155 Lent

Fl.

pp

156

1 19

pp

D. et F. 8515

71

3 [170] Hrb. [171] 19 Fl. pp

[172] Lent pp

[173] Très ralenti 1 1 10 pp

[174] au Mouvt. Cédez très peu Solo p

Cédez [175] pte Fl. Gde Fl. Retenez [176] Très lent. Solo p expressif et souple

[177] mf

[178] au Mouvt. ppp

Retenez [179] au Mouvt. Pressez ff

Saint-Saëns - Carnival of Animals

2

FLÛTE

Handwritten number 14 on the left margin. The score shows measures 3 and 4 of a flute part. Measure 3 is marked with a '3' in a box and contains a triplet of eighth notes. Measure 4 is marked with a '4' in a box and contains a quarter note followed by a triplet of eighth notes. A pink diagonal line is drawn across the staves.

Nº 8 Personnages à longues oreilles

Ad libitum 24. The score is for a single staff in 3/4 time, marked 'Ad libitum' with a tempo of 24. It features a long, sustained note in the final measure.

Nº 9 Le Coucou au fond des bois

Andante 42. The score is for a single staff in 3/4 time, marked 'Andante' with a tempo of 42. It features a long, sustained note in the final measure.

Nº 10

Volière

Moderato grazioso. The score is for a woodwind quartet (Quatuor) in 3/4 time, marked 'Moderato grazioso'. It includes parts for Flute (FLÛTE), Basses (Basses), and a section labeled 'p'. The score consists of five staves, with the first staff starting with a '1' in a box. The music features complex, fast-moving patterns.

Saint-Saëns - Carnival of Animals

FLÛTE

3

Musical score for Flute, measures 2-4. The score is written on a single staff with a treble clef and a key signature of one flat (B-flat). Measure 2 is marked with a '2' in a box. Measure 3 is marked with a '3' in a box. Measure 4 is marked with a '4' in a box. The music features a series of eighth and sixteenth notes, with a crescendo leading to a fortissimo (f) dynamic in measure 4. A purple bracket is drawn on the right side of the score, spanning from the end of measure 3 to the end of measure 4.

N°11

Pianistes

Allegro moderato

30

A single musical staff with a treble clef and a key signature of one flat (B-flat). The staff is empty, with only the clef and key signature visible.

N°12

Fossiles

Allegro ridicolo

72

A single musical staff with a treble clef and a key signature of one flat (B-flat). The staff is empty, with only the clef and key signature visible.

N°13

Le Cygne

Andantino grazioso

28

A single musical staff with a treble clef and a key signature of one flat (B-flat). The staff is empty, with only the clef and key signature visible.

FLUTE I

3

ten. *p* *pp* tranquillo *pp* *p* *p dolce* *cresc.*

III

III Gavotte

Non troppo allegro $\text{♩} = 144$

f *ff* *p* *pp* *f* *pp* *p poco meno* *mp* *p* *pp*

IV

IV

Molto vivace $\text{♩} = 152$

pp *pp* *ff subito* *p* *pp* *ff* *p* *f subito* *pp*

di - mi

FLUTE I

Handwritten pink annotations:

- Measure 7: A bracket highlights a sixteenth-note passage.
- Measure 8: A bracket highlights a sixteenth-note passage.
- Measure 12: A large bracket highlights the final measure, which includes a triplet of eighth notes.

Measure numbers and dynamics:

- Measure 1: *p*
- Measure 2: *p*
- Measure 3: *f*
- Measure 4: *f*
- Measure 5: *ff*
- Measure 6: *mp scherzando*
- Measure 7: *ff*
- Measure 8: *ff*
- Measure 9: *ff*
- Measure 10: *ff*
- Measure 11: *ff*
- Measure 12: *ff*
- Measure 13: *pp*
- Measure 14: *pp*
- Measure 15: *pp*
- Measure 16: *pp*
- Measure 17: *pp*
- Measure 18: *pp*
- Measure 19: *pp*
- Measure 20: *pp*
- Measure 21: *pp*
- Measure 22: *pp*
- Measure 23: *pp*
- Measure 24: *pp*
- Measure 25: *pp*
- Measure 26: *pp*
- Measure 27: *pp*
- Measure 28: *pp*
- Measure 29: *pp*
- Measure 30: *pp*
- Measure 31: *pp*
- Measure 32: *pp*
- Measure 33: *pp*
- Measure 34: *pp*
- Measure 35: *pp*
- Measure 36: *pp*
- Measure 37: *pp*
- Measure 38: *pp*
- Measure 39: *pp*
- Measure 40: *pp*
- Measure 41: *pp*
- Measure 42: *pp*
- Measure 43: *pp*
- Measure 44: *pp*
- Measure 45: *pp*
- Measure 46: *pp*
- Measure 47: *pp*
- Measure 48: *pp*
- Measure 49: *pp*
- Measure 50: *pp*
- Measure 51: *pp*
- Measure 52: *pp*
- Measure 53: *pp*
- Measure 54: *pp*
- Measure 55: *pp*
- Measure 56: *pp*
- Measure 57: *pp*
- Measure 58: *pp*
- Measure 59: *pp*
- Measure 60: *pp*
- Measure 61: *pp*
- Measure 62: *pp*
- Measure 63: *pp*
- Measure 64: *pp*
- Measure 65: *pp*
- Measure 66: *pp*
- Measure 67: *pp*
- Measure 68: *pp*
- Measure 69: *pp*
- Measure 70: *pp*
- Measure 71: *pp*
- Measure 72: *pp*
- Measure 73: *pp*
- Measure 74: *pp*
- Measure 75: *pp*
- Measure 76: *pp*
- Measure 77: *pp*
- Measure 78: *pp*
- Measure 79: *pp*
- Measure 80: *pp*
- Measure 81: *pp*
- Measure 82: *pp*
- Measure 83: *pp*
- Measure 84: *pp*
- Measure 85: *pp*
- Measure 86: *pp*
- Measure 87: *pp*
- Measure 88: *pp*
- Measure 89: *pp*
- Measure 90: *pp*
- Measure 91: *pp*
- Measure 92: *pp*
- Measure 93: *pp*
- Measure 94: *pp*
- Measure 95: *pp*
- Measure 96: *pp*
- Measure 97: *pp*
- Measure 98: *pp*
- Measure 99: *pp*
- Measure 100: *pp*

PETROUCHKA

1st Flute

First Part

IGOR STRAWINSKY

Vivace, $\text{♩} = 138$
Solo

f ben marc.

1 2 3 4 5 6 7 8 9 10 11 12 13 14

f *ff* *cres - cen - do* *f marc.* *ff*

51 *sim.* *f*

52 53 *f*

54 *f*

55 *f*

56 57 58 *Lento, ♩ = 60* 59 *crescendo*

60 Solo (Cadenza) *ff* Poco più mosso, ♩ = 60

61 *a tempo, più p*

62 *p*

63 *mp cantabile*

1/45 184.15Bk 2P. 75.164.207

~~38-05~~ 10-13 48

Das Abschreiben der
Stimme ist verboten.

Aufführungsrecht vom Komponisten vorbehalten.

Salomes Tanz

aus dem Musikdrama

Salome.

Sehr schnell und heftig.

1. gr. Flöte.

Richard Strauss.

10 A 5 Hob. B 1

ff *f*

mf *calando* *dim.*

Ziemlich langsam. *p* *pp*

pp *(hervortretend)* *f*

a tempo *etwas zögernd* *pp*

f *dim.* *p*

dim. *p*

Mahler - Sym No. 9, mvmt 1

4

1. FLÖTE

353

16

360

365

371

Plötzlich bedeutend langsamer (Lento) u. leise.
Misterioso

375

ff

f

dim.

pp

espress.

380

pp

pp

385

cresc.

f

cresc.

p subito

388

Nicht mehr so langsam

Etwas belebter.

398

f

f

gehalten

Schon ganz langsam

416

Sehr zögernd
2. Flöte

pp

schwebend

pp

pp

429

Molto rit.

Wieder a tempo

Zögernd.

ppp

8

10

U. E. 3396.

U. E. 3396.

Shostakovich - Sym. No. 6, mvt 1

2

Flauto I

Moderato $\text{♩} = 66$

80 **16** Tr. I, II *mp* solo

86 *mf* *p* *pp cresc.* *mf* *p* **17**

91 **18** *molto tenuto* 2 3

99 Ob. I **19** *Sostenuto* *f espress. cresc.* *ff*

105 *dim.* **20** $\text{♩} = 52$ 2 4 **21** 7

122 **22** 1 1 1 1 1 VI. I

130 **23** *ppp* solo

138 **24** 5 5 5 5 5 6 trillo

141 *trillo* 6 6 6 6 6 5 7

144 **25** *mf*

Shostakovich - Sym No. 6, mvt 1

Flauto I 3

148 *ppp* *trillo* *tr*

151 *riten.* [26] *a tempo* 1 3 2 *poco riten.* *a tempo* Timp.

160 [27] *solo* *ppp* 7 3

165 *tr* 10 *morendo* 1

170 [28] *Sostenuto* 7 1 [29] *Largo* $\text{♩} = 44$ 10 8 [30] 5 [31] 1 [32] 5 [33] 1 1 10

II

Clar. picc.

[34] *Allegro* $\text{♩} = 88-96$ 15 [35] 3

24 [36] *p cresc.* [37] [38]

30 *ff* 5 *f marcato*

41

47 8 [39] 4 *f>* *f>* 1 [40] 8